



MONTHLY MEMBERSHIP PROGRESS REPORT

District 4 L3

Results as of: 6/30/2017

GMT: OPEN

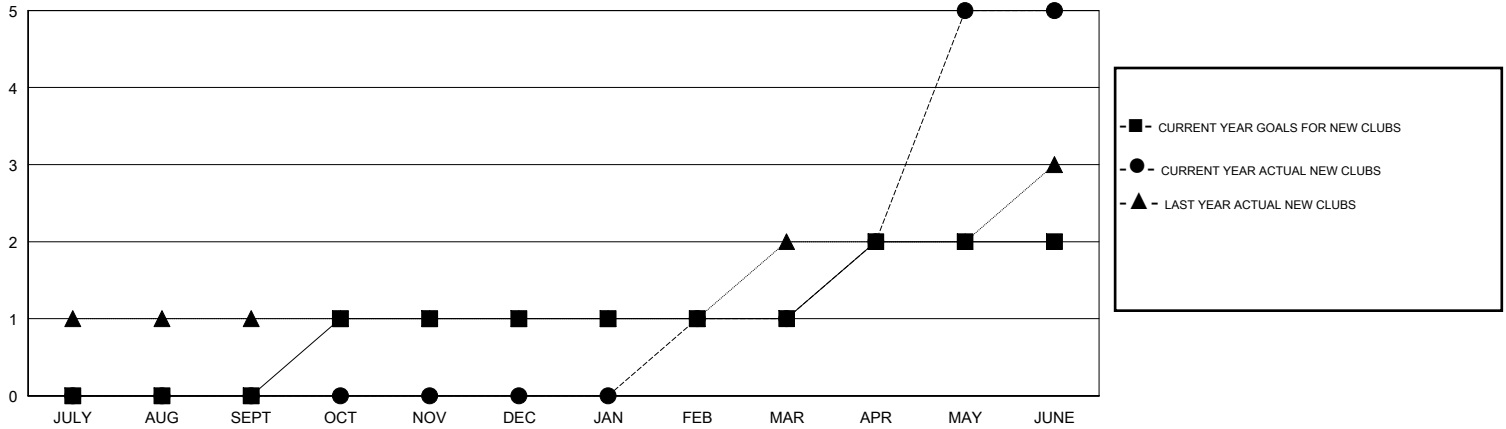
LOCATION CALIFORNIA

GMT CA

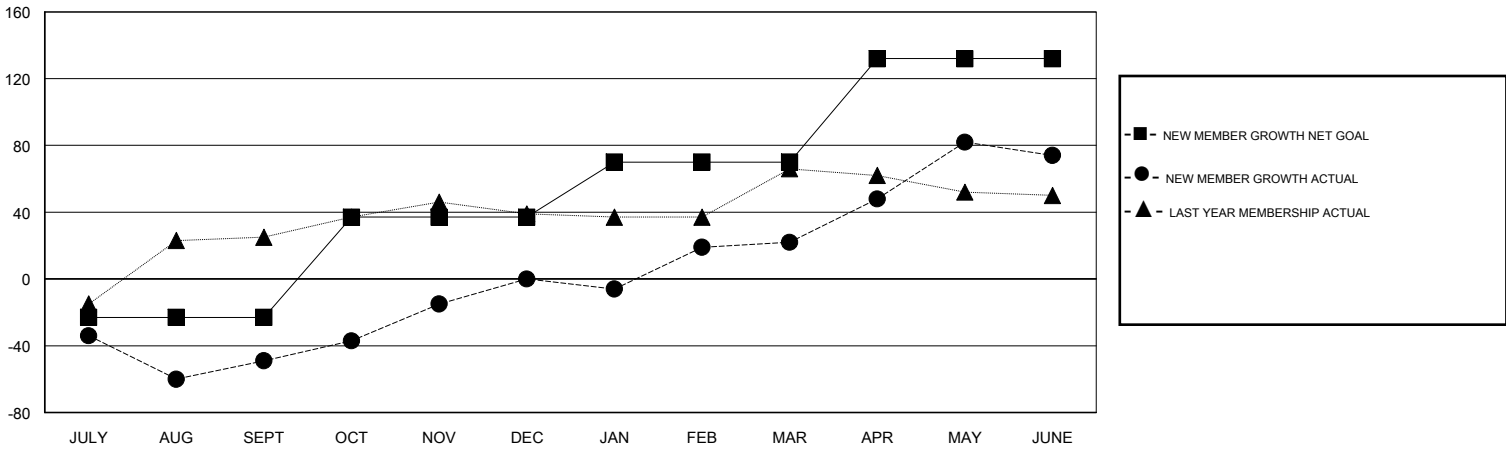
| Clubs | | | |
|-----------------------|---------------|-----------|---------------|
| RESULTS FOR 2016-2017 | | | |
| QUARTER | NEW CLUB GOAL | NEW CLUBS | DROPPED CLUBS |
| JULY/AUG/SEPT | 0 | 0 | 0 |
| OCT/NOV/DEC | 1 | 0 | 0 |
| JAN/FEB/MAR | 0 | 1 | 0 |
| APR/MAY/JUNE | 1 | 4 | 2 |

| Members | | | |
|-----------------------|--|--|--|
| RESULTS FOR 2016-2017 | | | |
| QUARTER | NEW MEMBER GROWTH NET GOAL (not reinstated or transfers) | NEW MEMBER GROWTH ACTUAL (not reinstated or transfers) | DROPPED MEMBERS ACTUAL (including transfers) |
| JULY/AUG/SEPT | -23 | 78 | 127 |
| OCT/NOV/DEC | 60 | 63 | 14 |
| JAN/FEB/MAR | 33 | 48 | 26 |
| APR/MAY/JUNE | 62 | 155 | 103 |

GOALS AND ACTUAL NEW CLUBS CUMULATIVE



GOALS AND ACTUAL MEMBERS CUMULATIVE



| | | |
|------------------------|---|-------------------------------------|
| DROPPED CLUBS: 2 | 40 CLUBS OF 58 ADDED 1 OR MORE NEW MEMBERS | GENDER DISTRIBUTION |
| | | MALE 725 (57.22%) |
| | | FEMALE 542 (42.78%) |
| DROPPED MEMBERS | CLICK HERE FOR CUMULATIVE MEMBERSHIP DATA | TOTAL FAMILY UNIT MEMBERS 280 |
| DECEASED 9 | | FAMILY MEMBERS PAYING HALF DUES 148 |
| CLUB CANCELLED 3 | | |
| OTHER 258 | | |
| TOTAL 270 | | |